

Walkability Audit



03/02/2020



Kiltealy National School

Enniscorthy

Co. Wexford

Y21 WN15

Roll Number: 16833N



Walkability Audit Report

Green-Schools Travel is a two year programme and students will undertake an additional travel survey at the end of the Travel theme.

The aim of Green-Schools Travel is to change the behavior of Students, parents and staff to adopt sustainable modes of travel (i.e. walking, cycling, public transport, park & stride, carpooling) as much as possible and reduce vehicle congestions and the unsustainable use of the private car. Programs of behavior change can only make an impact when the infrastructure that staff and students to enjoy safe and efficient active travel modes.



A **Walkability Audit** is a methodical examination of pedestrian-friendly a route may or may not be.

The word **Walkability** means the “**ability to walk**”.

Executive Summary

Wexford County Council,

From this Walkability Audit, undertaken in February 2020, we found that the R702 on which Killealy National School is located is not suitable for children to walk and cycle from their homes to school at this present time. The biggest concern is the level of speeding by motorists travelling past the school and through the village of Killealy. There is a lack of infrastructure in place to prevent speeding outside the school, however we feel there is an opportunity to improve the safety for the school by redesigning the front of school.

Our request for infrastructure in the redesign of the front of school includes speed bumps, speed detector signs, clear hatching and the creation of a School Zone. School Zones are designed to encourage drivers to slow down and increase safety at the school gates in adding colourful visual installations to the school boundaries such as giant pencils as bollards and brightly painted road markings to signal priority to children. We feel these would greatly assist in preventing our school from blending into the built environment and make the school more visible to passing motorists. We would welcome the additions of these elements to the infrastructural changes proposed.

With regards with routes to school, there is no footpath connecting the community centre to the main road the R702, which the children use regularly. Footpaths are discontinued in the village and there is no pedestrian crossing in the village, which is a safety concern for the community and the children and staff of Killealy National School when they attend the local church.

Please find the full findings of our audit, examples of School Zone design and our requests for infrastructure in the report.

We look forward to your response.

Sincerely

The Green-School's Committee

Killealy National School

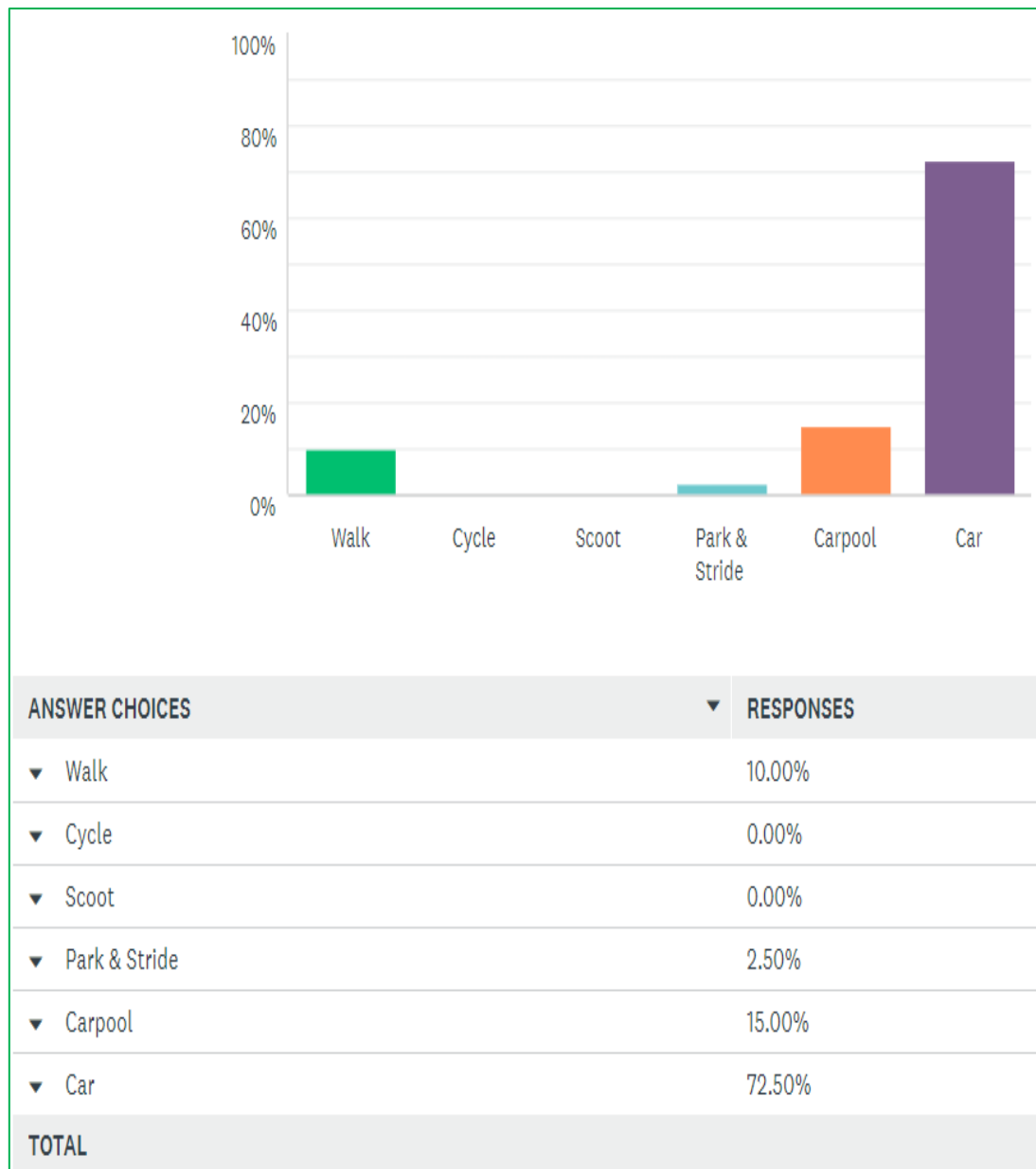
Walkability Audit Report



School Description

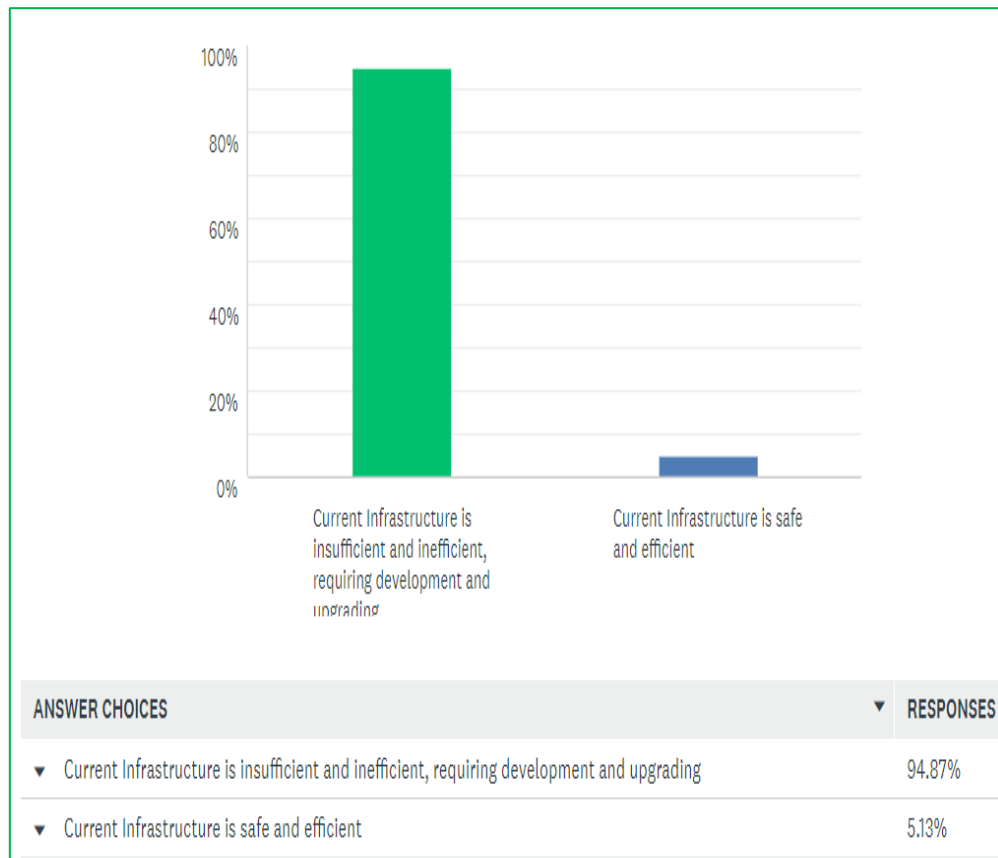
Kiltealy N.S is a co-educational school and currently has 93 pupils, mostly coming from the village of Kiltealy and its surrounding areas. Congestion is prevalent at pick up and collection times of 9:10am and 3:00pm. The school is located just north-east of the village centre on the R702, which is the main route from Enniscorthy to Kilkenny and is an extremely busy route.

How pupils travel to school



The school completed a Travel Baseline Survey in 2020 of families, the survey shows that approx. 88% of our families travel to school by car/car-pooling which contributes to major congestion at drop off and pick-up times. Improved infrastructure would encourage active travel.

Parents' Opinion on Infrastructure



The parents of Killealy National School do not consider the current infrastructure adequately safe to allow for more active modes of transport for their children. 95% of families state that the infrastructure is currently insufficient and ineffective.

Objectives of a Walkability Audit

1. To look at the barriers to promoting walking to school and to propose possible solutions if any.
2. To raise awareness on road safety

We used a number of tools on the audit to record our findings:

Recording sheets

Hi-visibility vests

Camera

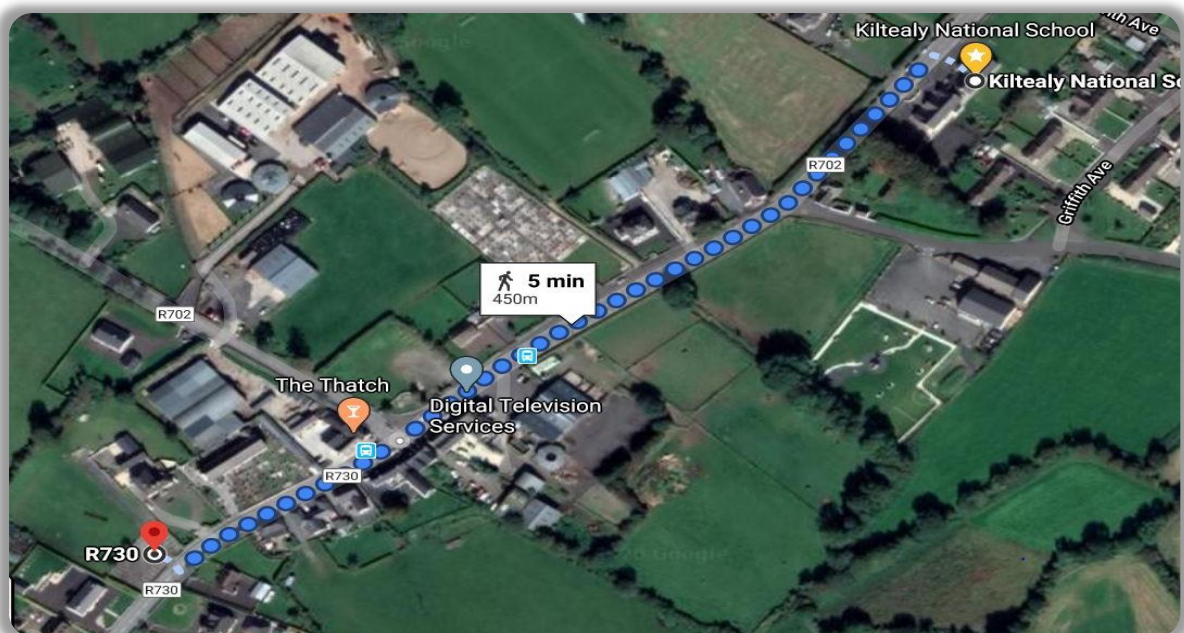
Pencils/Clipboards



Description of the route audited:

The route audited started at Killealy National School to the local church. The distance covered was 450m and took approximately 5 minutes. The route followed the along the R702 and R730 through the village centre.

Audit Route Map:



Walkability Audit Report




Summary of Issues

Front of School	Issue	Request for Infrastructure	
Road User Behaviours	Speed	Speed Bumps	Creation of School Zone School Zones are designed to encourage vehicles to slow down, discourage drop off and pick up to reduce congestion and increase safety at the school gate.
Road User Behaviours	Speed	Update traffic calming measures to include speed detectors.	
Signage & Road Markings	No clear hatching box outside school	Painting of clear hatching outside school	
Crossings	Informal crossing requires signals	Create a pedestrian crossing outside school	
Set-down Area	There is no parking at school	Redesign of set down area	
Insufficient staff car parking	There is no staff car parking	Redesign of parking area	
Routes to School	Issue	Request for Infrastructure	
Footpaths	Discontinued footpaths – no formal footpath through the village	Footpath to be installed	
Footpaths	There is no footpath connecting the Community Centre to the road	Footpath to be installed	
Crossings	There is no pedestrian crossing in the village.	Pedestrian crossing to be installed	

Walkability Audit Report

Front of School

Issue:	Speed
Requests for Infrastructure	Speed Bumps Speed Detector Signs in advance of school
Notes:	The speed at which cars travel on this wide, extremely busy regional route is alarming. The staff of Killealy have witnessed cars overtaking on this stretch of road right outside the school.

Location:	Outside Killealy National School
Photo:	

Walkability Audit Report

Front of School

Issue:	Signage and Road Markings
Requests for Infrastructure	<ul style="list-style-type: none">• Paint of Clear Hatching Box• Repaint double yellow lines• Creation of School Zone
Notes:	<p>Road markings have faded outside the school allowing the possibility to implement a School Zone outside Killealy National School.</p> <p>School Zones are designed to encourage vehicles to slow down, discourage drop off and pick up to reduce congestion and increase safety at the school gate.</p>

Location:



This is an outdated image of in front of the school. There are currently no double lines painted outside the school and there is no clear hatching box outside the box.

Photo:

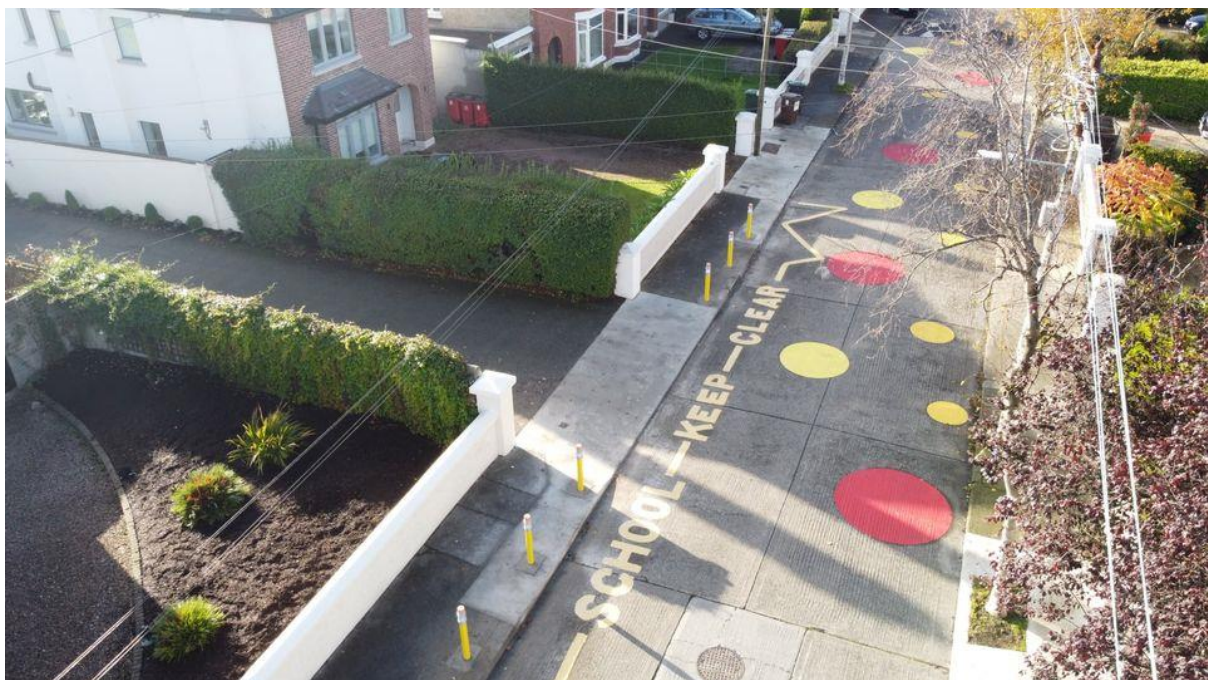


Walkability Audit Report

Creation of School Zone

School Zones are designed to encourage vehicles to slow down, discourage drop off and pick up to reduce congestion and increase safety at the school gate. A School Zones would be an excellent fit for the location and population on the school. This would improve the safety and well-being of pupils and reduce speed of traffic outside school. The following are examples of a School Zone implemented in Dublin, more details can be found at this link

<https://greenschoolsireland.org/dublins-first-school-zone-is-launched-at-francis-street-cbs/>.



Walkability Audit Report

Front of School

Issue:	Set-down Area Insufficient staff car parking Lack of pedestrian crossing
Requests for Infrastructure	<ul style="list-style-type: none">• Redesign of set down and parking area.• Install pedestrian crossing
Notes:	There is no parking at the school for staff and parents to use except the hard shoulder opposite the school.

Photo:



Photo:



Walkability Audit Report

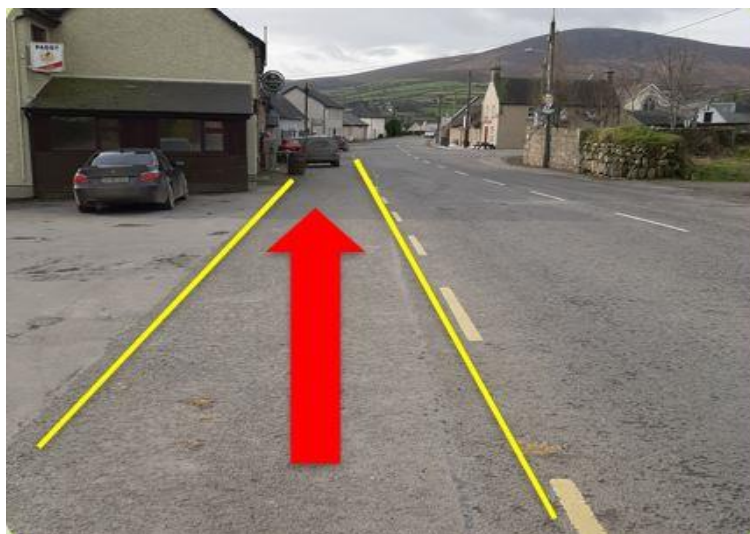
Routes to School

Issue:	Footpaths <ul style="list-style-type: none">Discontinued footpaths – no formal footpath through the village
Requests for Infrastructure	Footpath to be installed approximately 80 metres in length so students can connect to the village safely
Notes:	<p>For students and the community of Killealy there is no formal footpath through the village along the R702 and R730. There are several businesses in the village which combined with a steady volume of traffic is a safety hazard for the community.</p> <p>The children of Killealy National School attend the local church and the discontinuation of footpaths and lack of pedestrian crossing zones puts the pupils and staff at risk when crossing this extremely busy road to gain access to the church.</p>

Location:



Photo:



Walkability Audit Report

Issue:	Footpaths - Discontinued footpaths
Requests for Infrastructure	Footpath to be installed
Notes:	There is no footpath connecting the community centre to the main R702 road. Children from Killealy National School attend an after-school programme at the community centre therefore there is a safety concern.

Location:

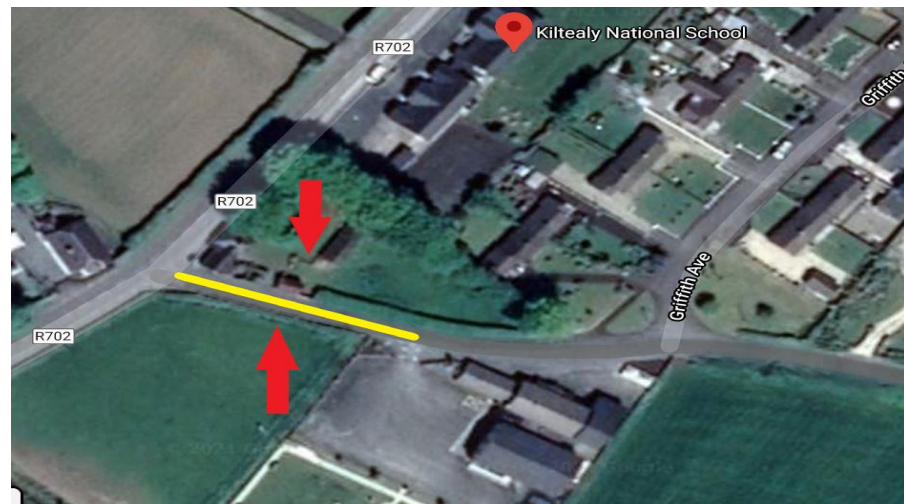


Photo:



Walkability Audit Report

Issue:	Crossings – there is no pedestrian crossing in Kiltealy village
Requests for Infrastructure	Pedestrian crossing to be installed to enable children and members of the community to cross the road in the village safely
Notes:	There is no pedestrian crossing in the village. The children of Kiltealy National School attend the local church and the lack of pedestrian crossing zones puts the pupils and staff at risk when crossing this extremely busy road in order to gain access to the church.

Location:



Photo:



Walkability Audit Report



Summary of Requests for Infrastructure

Front of School	Speed Bumps
	Update traffic calming measures to include speed detectors outside school
	Creation of School Zone
	Painting of clear hatching outside school
	Create a pedestrian crossing outside school
	Redesign of set down area and parking area for staff and parents
	Redesign of parking area
Routes to School	Footpath to be installed in the village
	Footpath to be installed to connect community centre to the main road R702
	Pedestrian crossing to be installed in the village

Walkability Audit Report



Thank you for reading our report.

Please contact us with your feedback using the details below.

Green-Schools Travel Education Officer

Jennifer Cooney

Email: jcooney@eeu.antaisce.org

Phone: 087 737 9575

School Details:

Name: Maeve Duff

School: Killealy National School

Enniscorthy

Co. Wexford

Email: principal20killealyns@gmail.com

Phone: 053 - 9255446

smartertravel>>>
>>> schools



An Roinn Iompair,
Turasóireacht agus Spóirt
Department of Transport,
Tourism and Sport

Údarás
Náisiúnta Iompair
National Transport Authority

Travel is the fourth theme of the Green-Schools programme. The Travel theme is funded by the Department of Transport, Tourism and Sport and supported by the National Transport Authority

For further information about the theme visit www.greenschoolsireland.org

